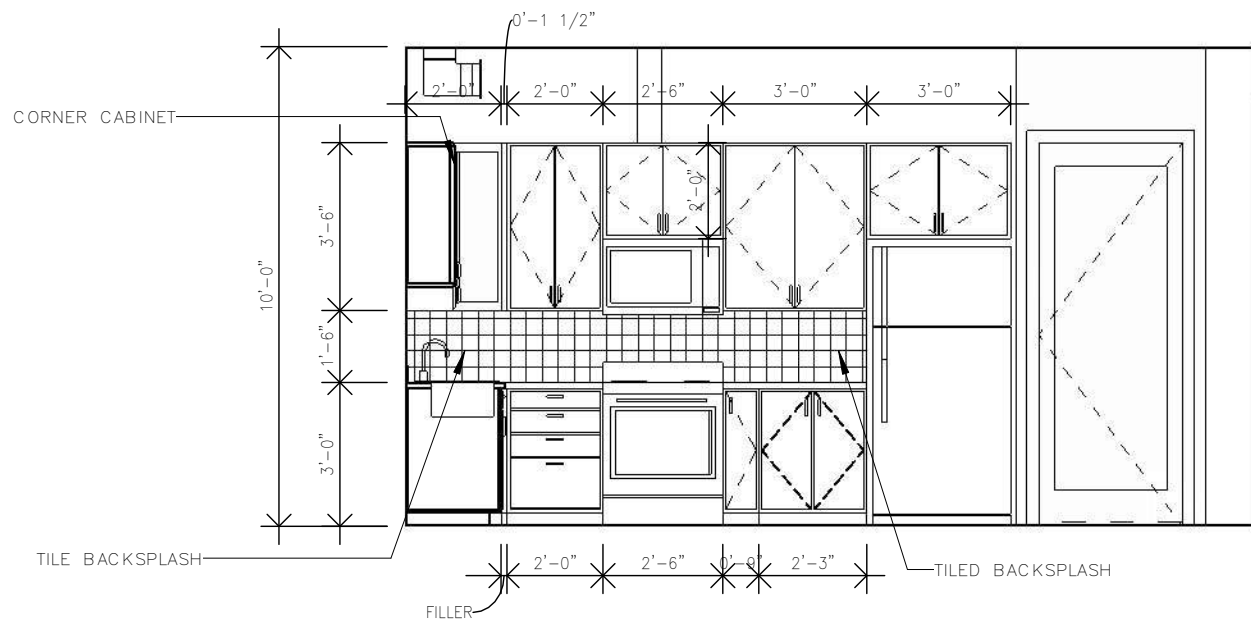
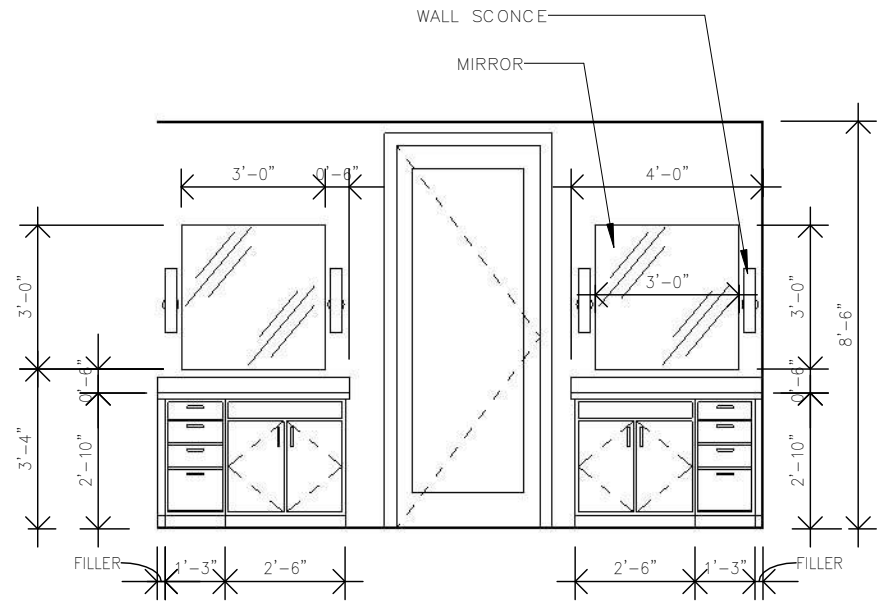


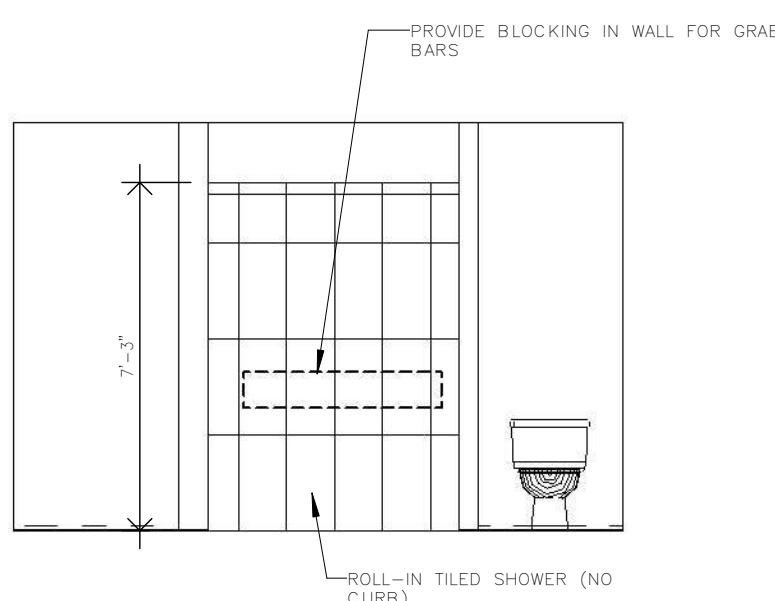
1 UNIT 101 - ELEVATION 1  
SCALE: 1/4" = 1'-0"



2 UNIT 101 - ELEVATION 2  
SCALE: 1/4" = 1'-0"

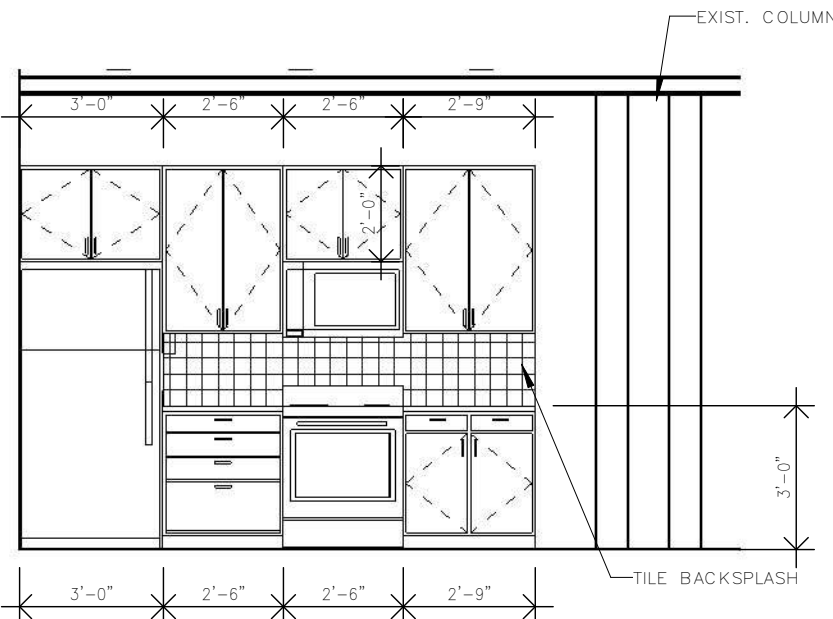


3 UNIT 101 - ELEVATION 3  
SCALE: 1/4" = 1'-0"

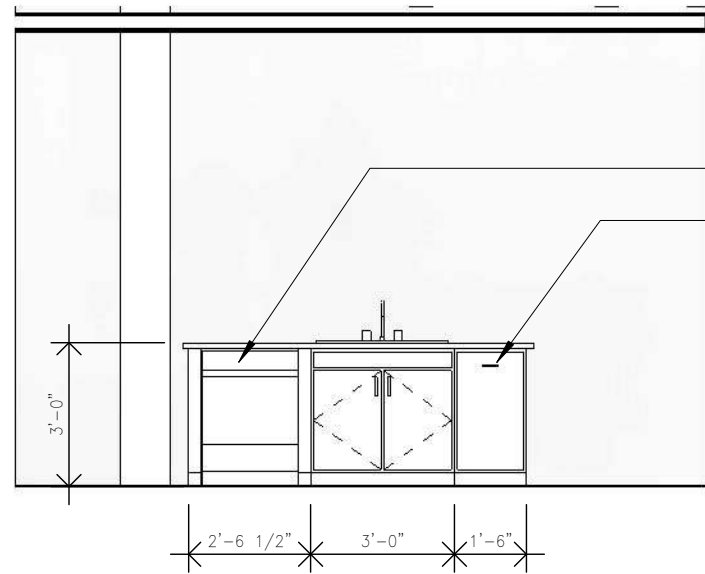


4 UNIT 101 - ELEVATION 4  
SCALE: 1/4" = 1'-0"

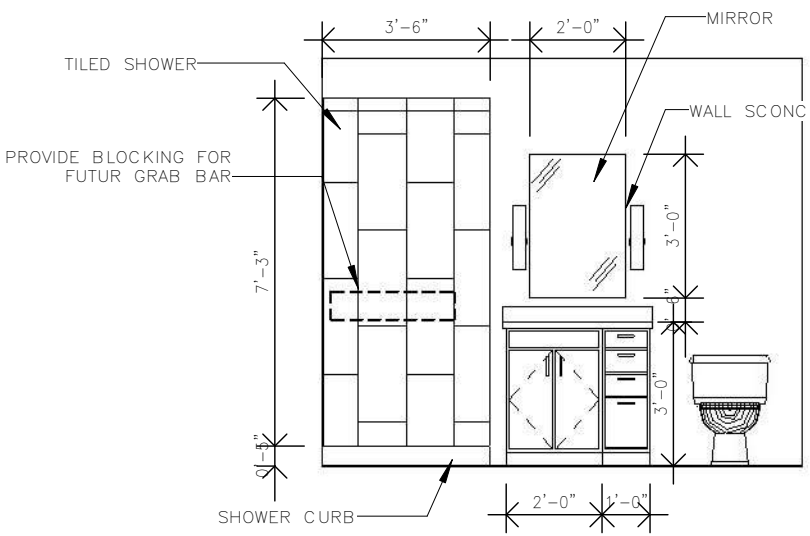
**INTERIOR ELEVATION - GENERAL NOTES:**  
1.) ALL EXPOSED CABINET FACES TO HAVE FINISHED PANELS MATCHING THE SELECTED DOOR STYLE.  
2.) ALL UPPER AND LOWER CABINETS TO HAVE ADJUSTABLE SHELVES; NUMBER OF SHELVES TO COINCIDE WITH HEIGHT OF CABINET - SUBMIT SHOP DRAWINGS TO INTERIOR DESIGNER FOR FINAL APPROVAL.  
3.) ALL SHOWER AND TUB TILE SURROUNDS TO HAVE BULLNOSE TRIM AT EXPOSED TILE EDGES.  
4.) ALL NON-ILLUMINATED MIRRORS TO HAVE A 1" STAINLESS STEEL FRAME W/ SQUARE PROFILE.  
5.) ALL SHOWERS TO HAVE ONE RECESSED SHAMPOO NICHE 12"W X 16"H; COORDINATE EXACT PLACEMENT WITH INTERIOR DESIGNER.  
6.) ALL SHOWER ENCLOSURES TO BE FRAMELESS GLASS UP TO 7'-0"H UNLESS NOTED OTHERWISE.



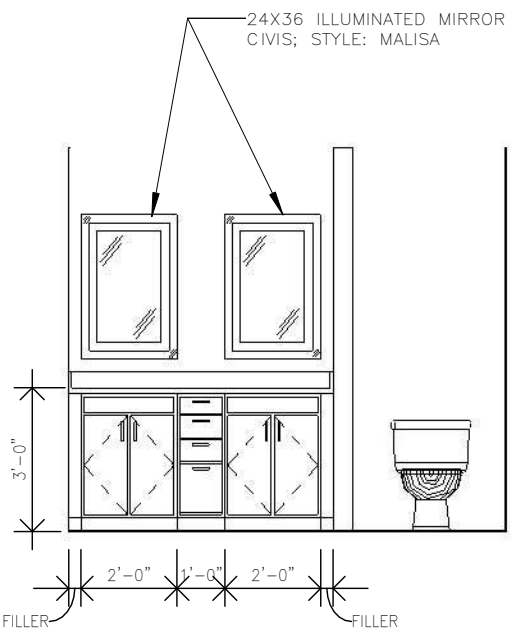
5 UNIT 102 - ELEVATION 1  
SCALE: 1/4" = 1'-0"



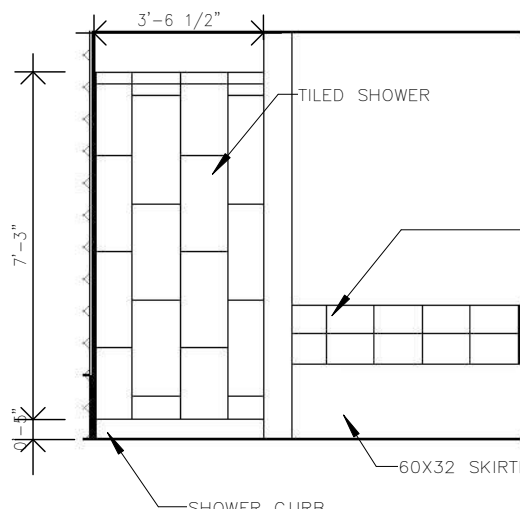
6 UNIT 102 - ELEVATION 2  
SCALE: 1/4" = 1'-0"



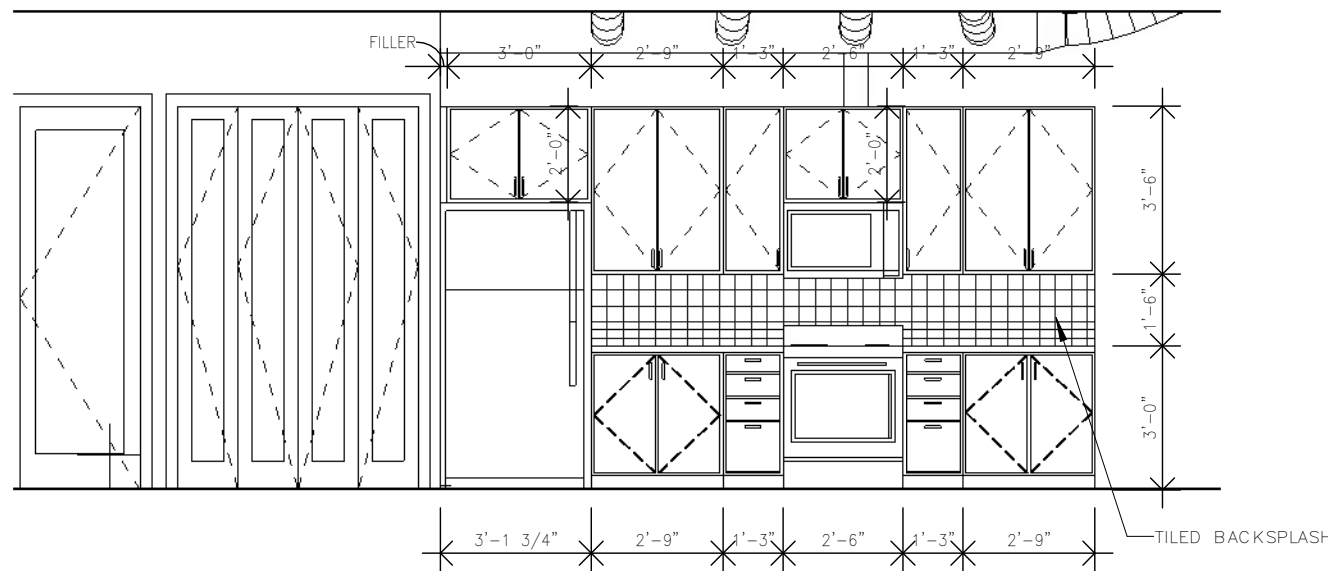
7 UNIT 102 - ELEVATION 3  
SCALE: 1/4" = 1'-0"



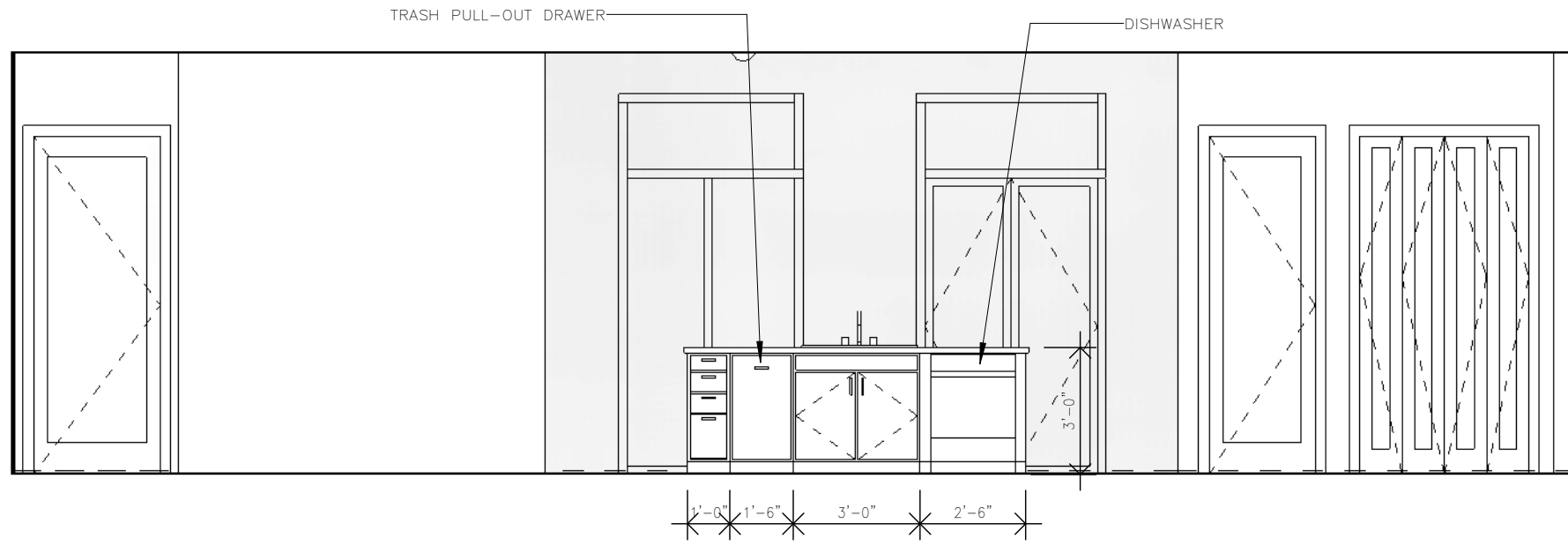
8 UNIT 102 - ELEVATION 4  
SCALE: 1/4" = 1'-0"



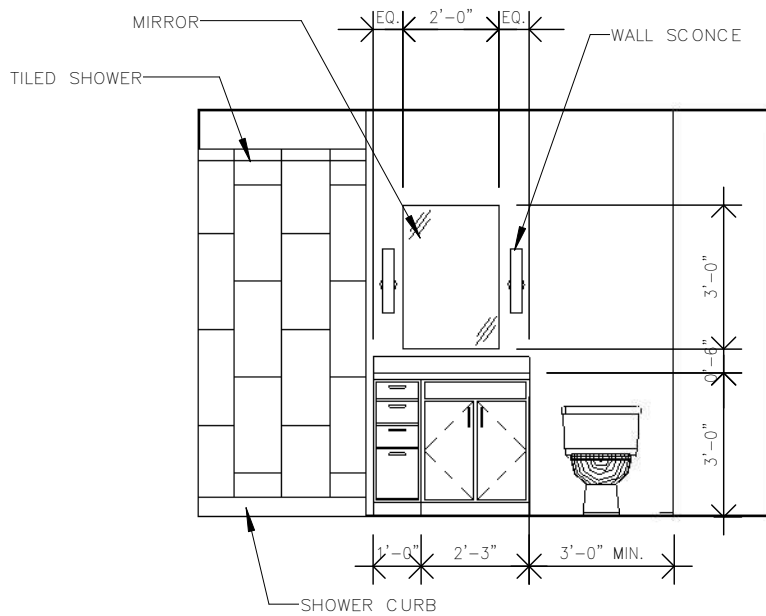
9 UNIT 102 - ELEVATION 5  
SCALE: 1/4" = 1'-0"



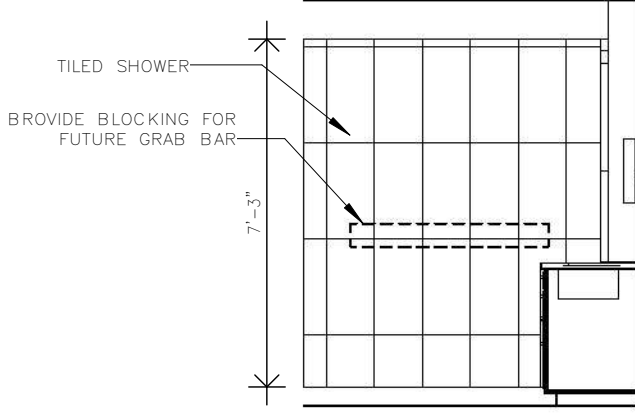
10 UNIT 201 - ELEVATION 1  
SCALE: 1/4" = 1'-0"



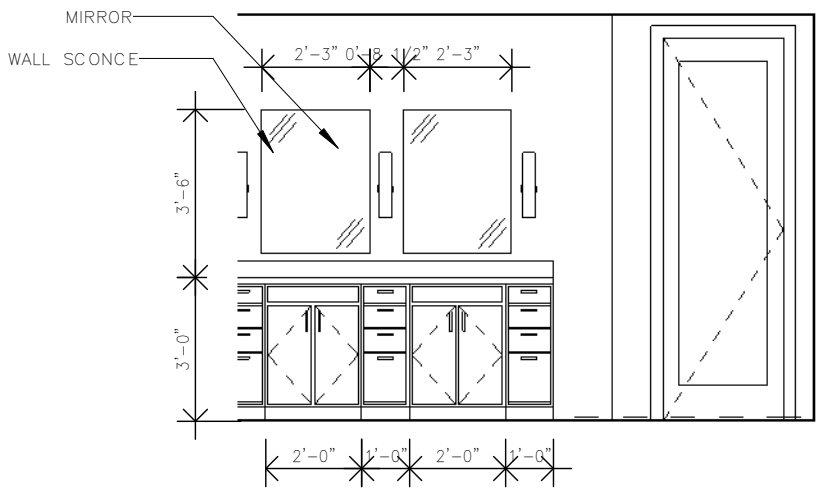
11 UNIT 201 - ELEVATION 2  
SCALE: 1/4" = 1'-0"



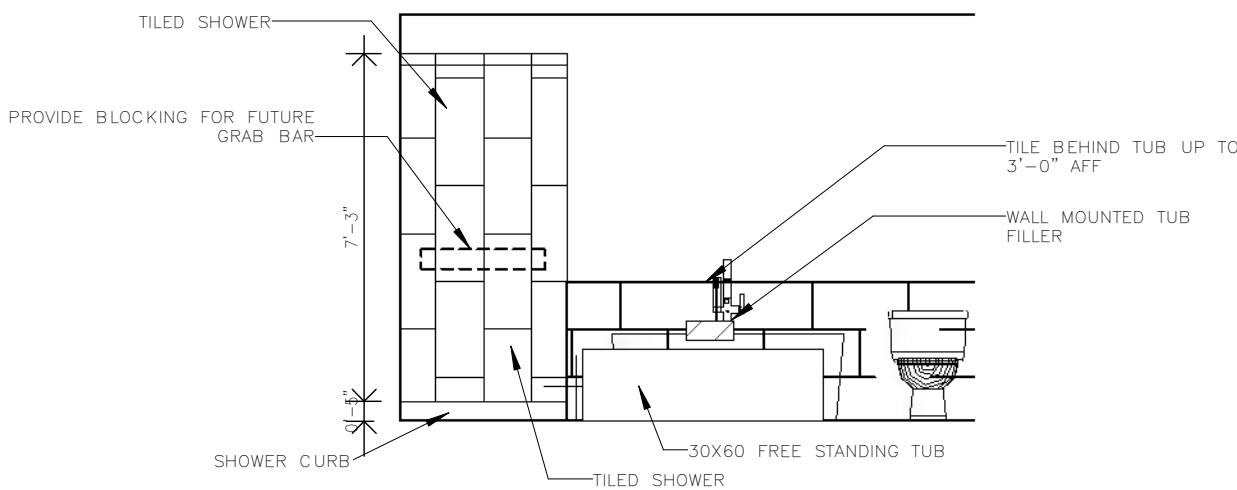
12 UNIT 201 - ELEVATION 3  
SCALE: 1/4" = 1'-0"



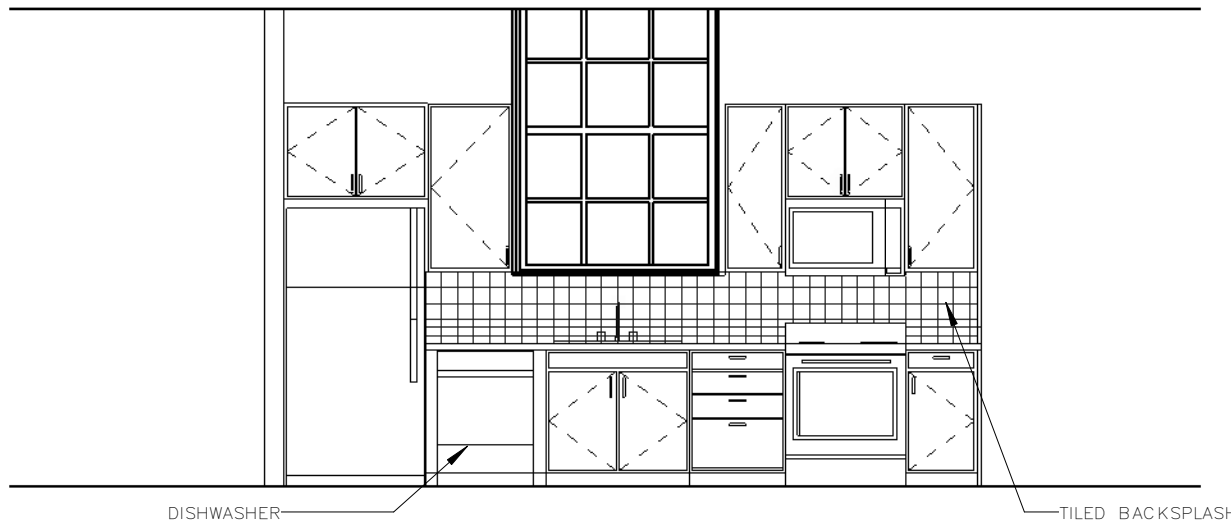
13 UNIT 201 - ELEVATION 4  
SCALE: 1/4" = 1'-0"



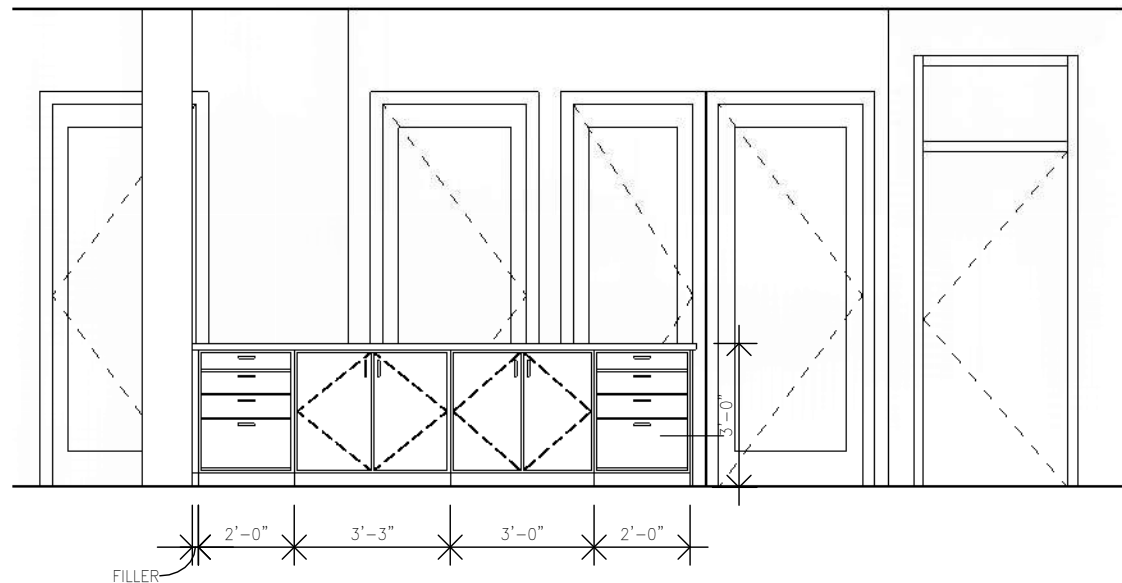
14 UNIT 201 - ELEVATION 5  
SCALE: 1/4" = 1'-0"



15 UNIT 201 - ELEVATION 6  
SCALE: 1/4" = 1'-0"



16 UNIT 202 - ELEVATION 1  
SCALE: 1/4" = 1'-0"



17 UNIT 202 - ELEVATION 2  
SCALE: 1/4" = 1'-0"

REVISION HISTORY				
		SCHEMATIC DESIGN	DESIGN DEVELOPMENT	FOUNDATION PERMIT
1	06/20/16			
2	07/14/16			
3	08/19/16			
4	09/30/16			